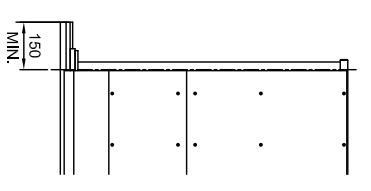
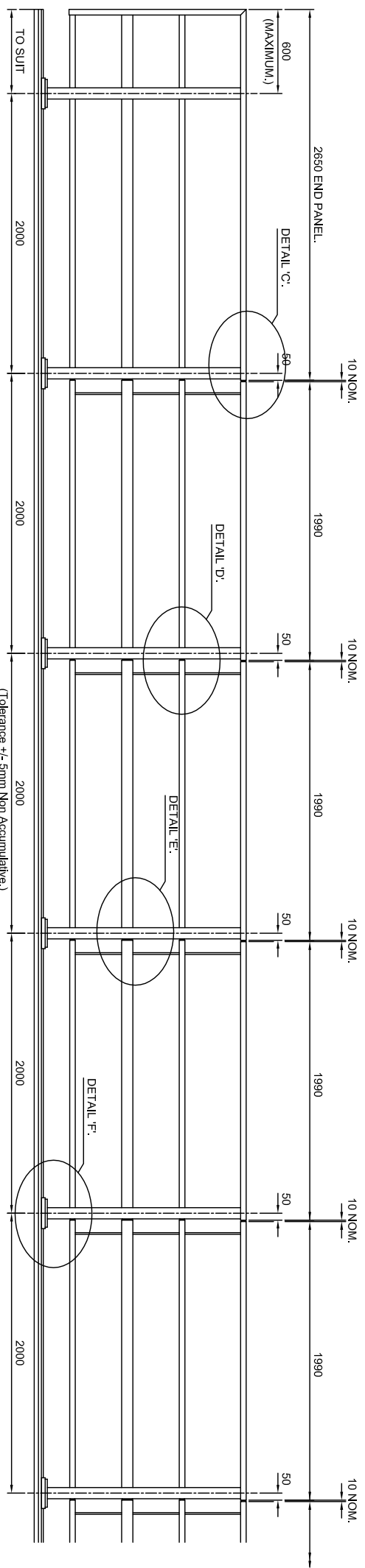


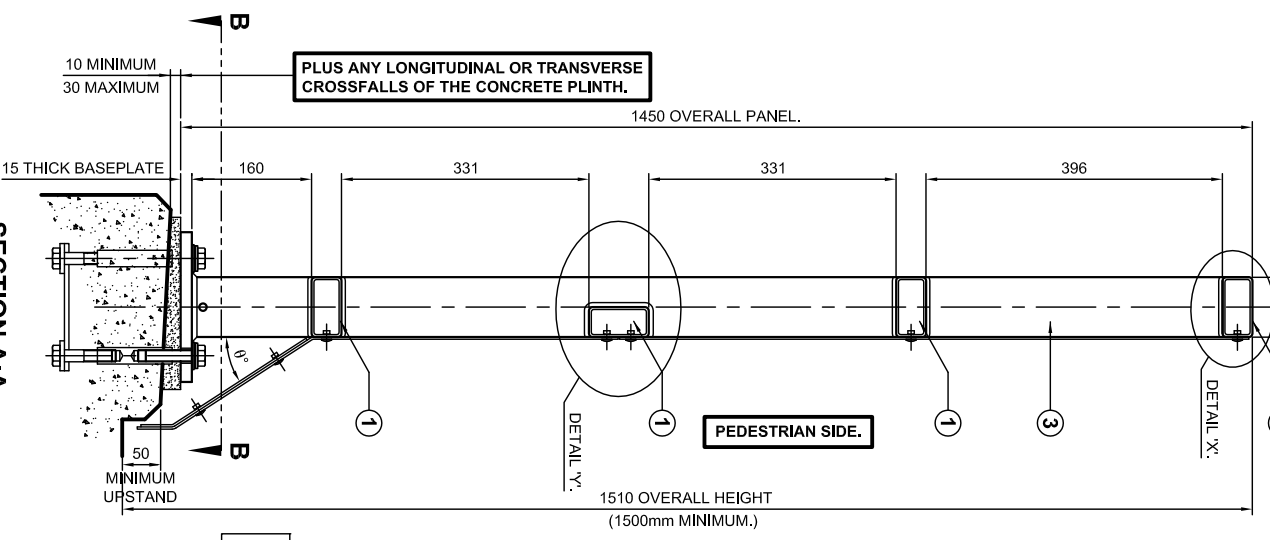
**TYPICAL PARAPET ELEVATION WITH SHEETING.**  
SHEETING JOINTS DO NOT LINE UP WITH THE RAIL JOINTS BUT ARE CENTRED ON THE POSTS.



**ALTERNATIVE END PANEL.**  
(WITHOUT OVERHANG.)



**TYPICAL PARAPET ELEVATION WITHOUT SHEETING.**



**SECTION A.A.**

**SECTION B.B.**

ANGLE (α) TO BE AMENDED TO SUIT PLINTH DIMENSIONS.

- GENERAL NOTES.**
- 1/ ALL STEEL WELDING TO BE IN ACCORDANCE WITH BS EN 1011-1 and 2.
  - 2/ WELDERS AND WELDING PROCEDURES ARE IN ACCORDANCE WITH BS EN ISO 9606-1 AND BS EN ISO 15607.
  - 3/ PANELS CANNOT BE RADIUS TO SUIT ON SITE. TIGHTER RADI CAN BE SUPPLIED PERFORMED BY SPECIAL ARRANGEMENT.
  - 4/ DIMENSIONS RELATIVE TO HEIGHT DATUM ASSUME THERE IS NO LONGITUDINAL FALL ON THE PLINTH. ADDITIONAL TOLERANCES TO TAKE ACCOUNT OF THESE FALLS ARE PERMISSIBLE.
  - 5/ AN EASILY LEGIBLE IDENTIFICATION PLATE SHALL BE APPLIED AND LOCATED NEAR TO THE TOP OF THE FIRST POST AT EACH APPROACH END IN AN EASILY VISIBLE POSITION.

MATERIAL SPECIFICATION.		SPECIFICATION	
ITEM	SPECIFICATION	ITEM	SPECIFICATION
TOP RAIL.	POST, TOP RAIL AND INTER RAILS IN ACCORDANCE WITH BS EN 10219-1, BS EN 10219-2 GRADE S275/J2H, BASEPLATE, JOINTS AND SOLID INFILL IN INTER RAIL JOINT.	BOLTS.	ALL BOLTS / SCREWS TO CONFORM TO BS 3602 AND BE STAINLESS STEEL TO BS EN ISO 3506-1, GRADE A4-80.
POST SECTION.	BS EN 10219-1, BS EN 10219-2 GRADE S275/J2H, BASEPLATE, JOINTS AND SOLID INFILL IN INTER RAIL JOINT.	RIVETS.	RIVETS TO BE STAINLESS STEEL REF: M6/P-U8-6 OR EQUIVALENT.
INTER RAIL.	BS EN 10025-1, BS EN 10025-2 GRADE S275 J2H.	PLAIN WASHERS.	WASHERS TO BE M6 FORM 'C' AND M16 FORM 'C' CONFORMING TO BS 4320 AND BE STAINLESS STEEL TO BS EN ISO 3506 GRADE A4 OR A2.
INFILL PLATE.			

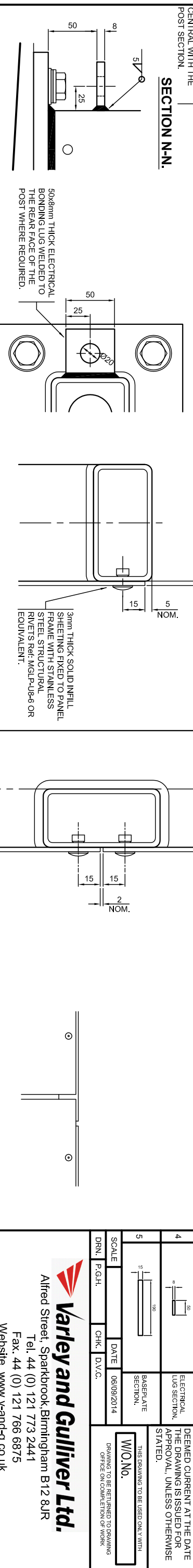
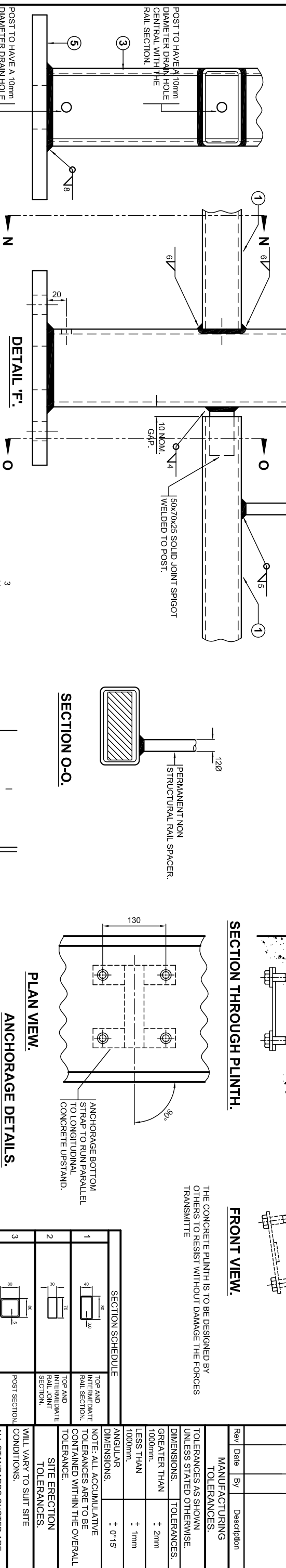
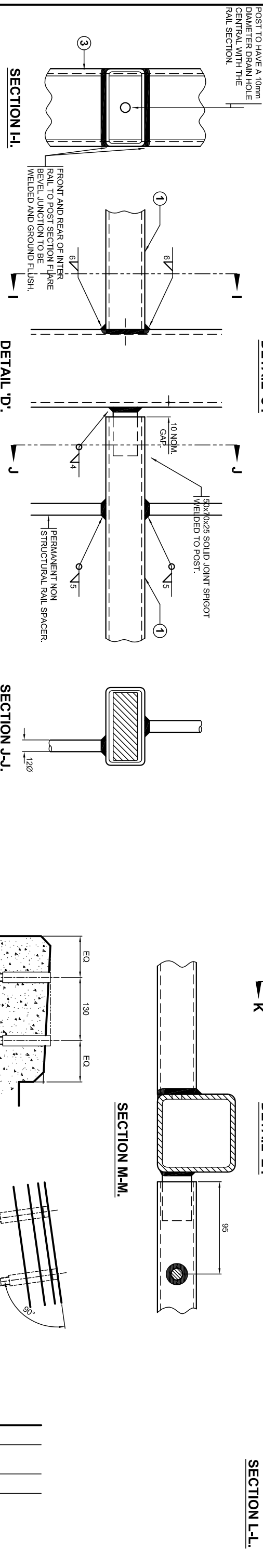
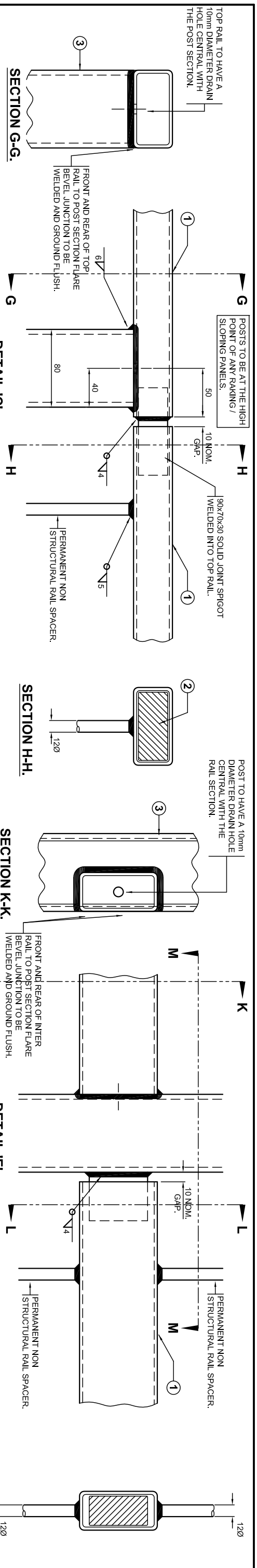
PEDESTRIAN PARAPET INFORMATION		PEDESTRIAN PARAPET PERFORMANCE.	
UNFACTORED MOMENT OF RESISTANCE OF POST (kNm) AT UNDERSIDE OF BASEPLATE.	11.3kNm	POST AND RAIL.	CLASS 'E'.
SHEAR FORCE RESISTANCE OF POST (kN)	121kN	INFILLSHEET.	CLASS 'V'.
SIZE OF HOLDING DOWN BOLTS	M16	POST AND RAIL.	CLASS '3'.
		INFILLSHEET.	CLASS 'C'.

SECTION SCHEDULE		DESCRIPTION	
NO.	SECTION	DESCRIPTION	REVISIONS
1	TOP AND INTERMEDIATE RAIL SECTION.	TOP AND INTERMEDIATE RAIL SECTION.	
2	TOP AND INTERMEDIATE RAIL JOINT SECTION.	TOP AND INTERMEDIATE RAIL JOINT SECTION.	
3	POST SECTION.	POST SECTION.	
4	ELECTRICAL LUG SECTION.	ELECTRICAL LUG SECTION.	
5	BASEPLATE SECTION.	BASEPLATE SECTION.	

SCALE	DATE	06/09/2014
DRAWN	CHK	D.V.C.
P.G.H.	CHK	

**Varley and Gulliver Ltd.**  
Alfred Street, Sparkbrook, Birmingham B12 8JR  
Tel: 44 (0) 121 773 2441  
Fax: 44 (0) 121 766 6875  
Website: www.v-and-g.co.uk

TITLE	DRAWING NUMBER
STANDARD ARRANGEMENT DRAWINGS OF STEEL PEDESTRIAN PARAPET RAILWAY SYSTEM - 1500mm HIGH. (SHEET 1 OF 2.)	VGSP - 05.



COPYRIGHT © SEPTEMBER 2014, VARLEY AND GULLIVER LIMITED.

ALL DIMENSIONS IN MM.

STEEL PEDESTRAIN PARAPET SYSTEMS ARE COVERED BY DESIGN RIGHTS AND PATENT PENDING.

Rev Date By Description

MANUFACTURING TOLERANCES.

TOLERANCES AS SHOWN UNLESS STATED OTHERWISE.

DIMENSIONS GREATER THAN 1000mm LESS THAN 1000mm.

ANGULAR DIMENSIONS: ± 0°15'

NOTE: ALL ACCUMULATIVE TOLERANCES ARE TO BE CONTAINED WITHIN THE OVERALL TOLERANCE.

SITE ERECTION TOLERANCES WILL VARY TO SUIT SITE CONDITIONS.

ALL STANDARDS QUOTED ARE DEEMED CURRENT AT THE DATE THE DRAWING IS ISSUED FOR APPROVAL, UNLESS OTHERWISE STATED.

THIS DRAWING TO BE USED ONLY WITH W/O No. DRAWING TO BE RETURNED TO OFFICE ON COMPLETION OF WORK.

DRN P.G.H. CHK D.V.C. DATE 06/09/2014

SCALE

BASEPLATE SECTION.

ELECTRICAL LUG SECTION.

POST SECTION.

INTERMEDIATE RAIL JOINT SECTION.

TOP AND INTERMEDIATE RAIL SECTION.

SECTION SCHEDULE

1 90 10

2 90 10

3 80 5

4 80 5

5 100 100

Alfred Street, Sparkbrook, Birmingham B12 8JR  
Tel: 44 (0) 121 773 2441  
Fax: 44 (0) 121 766 6875  
Website: www.v-and-g.co.uk

Varley and Gulliver Ltd.

TITLE STANDARD ARRANGEMENT DRAWINGS OF STEEL PEDESTRIAN PARAPET RAILWAY SYSTEM - 1500mm HIGH (SHEET 2 OF 2).

DRAWING NUMBER VGSP - 05.