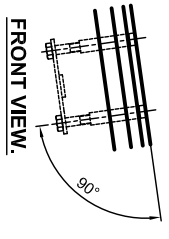


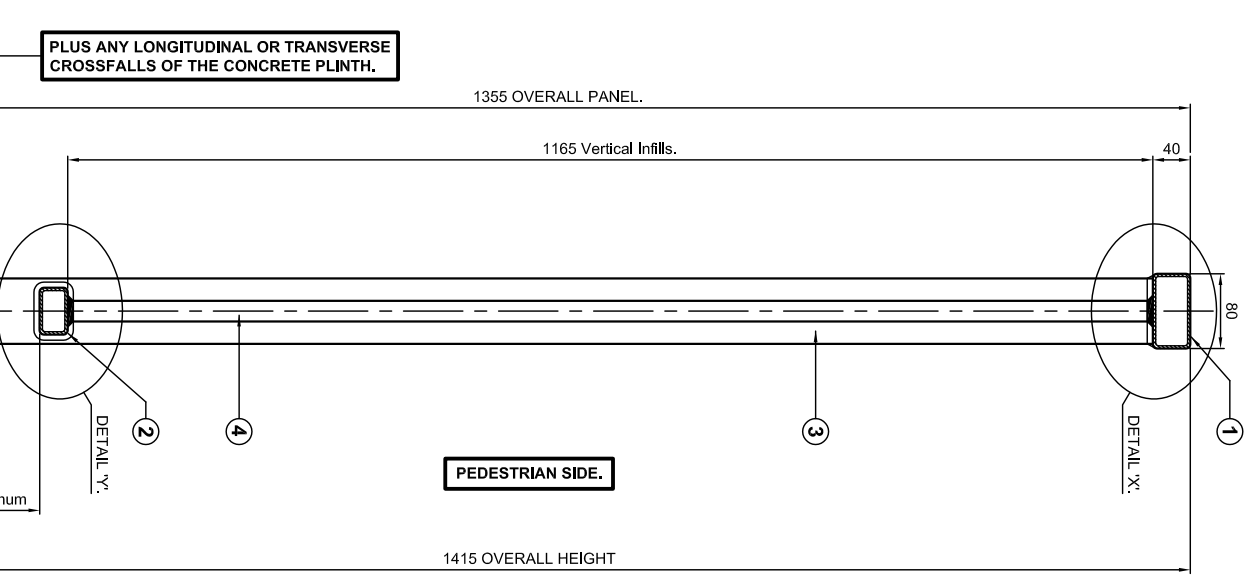
ALTERNATIVE END PANEL.
(WITHOUT OVERHANG.)

THE CONCRETE PLINTH IS TO BE DESIGNED BY OTHERS TO RESIST WITHOUT DAMAGE THE FORCES TRANSMITTED BY THE PARAPET UNDER LOAD.

ANCHORAGES TO BE ALIGNED PERPENDICULAR TO THE LONGITUDINAL ALIGNMENT OF THE CONCRETE PLINTH.



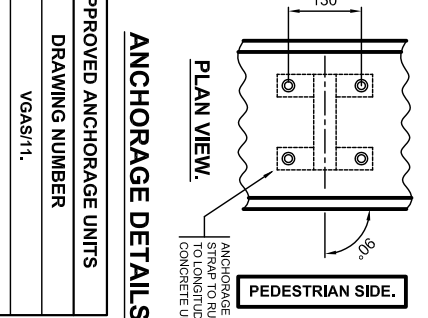
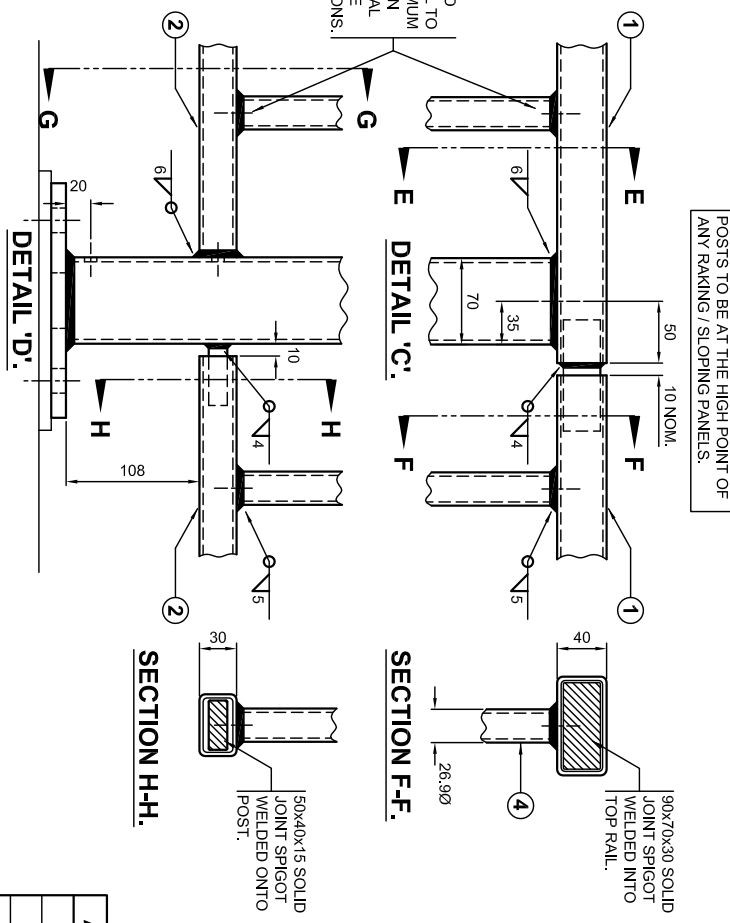
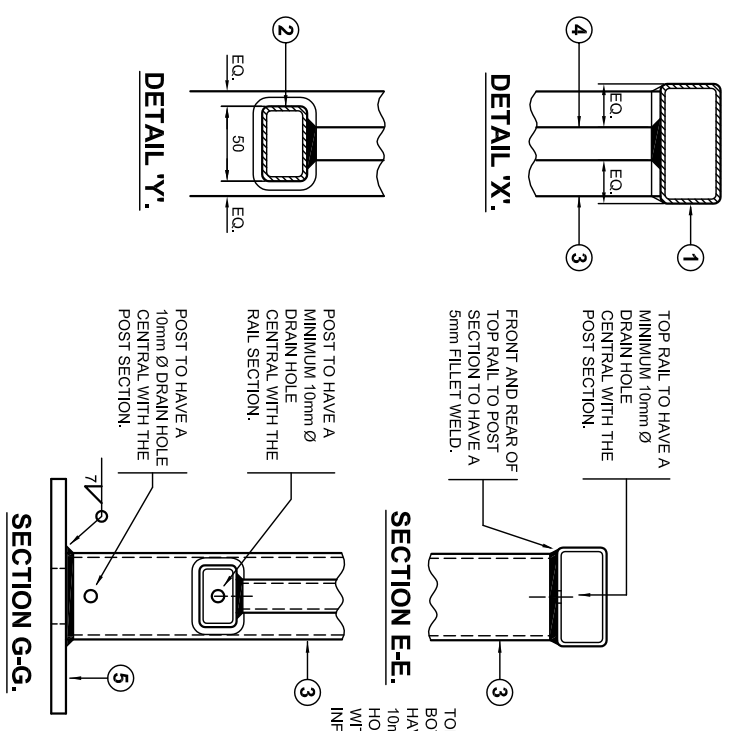
FRONT VIEW.



PEDESTRIAN SIDE.

TYPICAL ELEVATION ON GUARDRAIL.

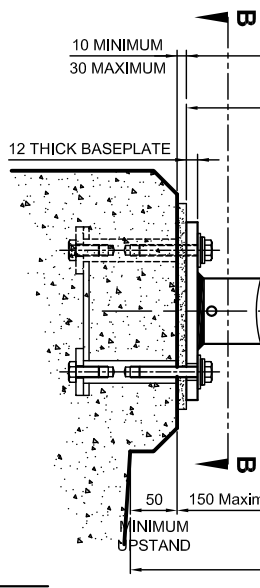
POSTS TO BE AT THE HIGH POINT OF ANY RAKING / SLOPING PANELS.



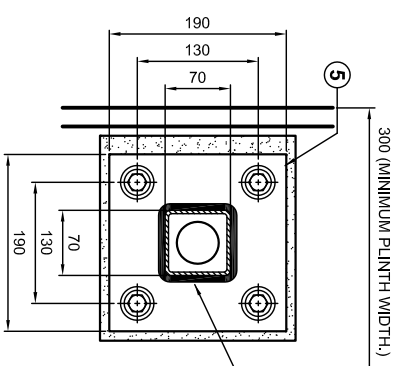
ANCHORAGE DETAILS.

GENERAL NOTES.

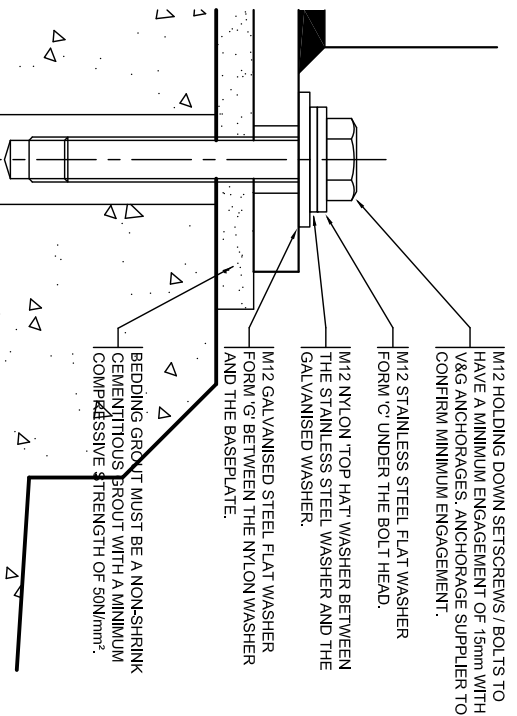
1. ALL STEEL WELDING TO BE IN ACCORDANCE WITH BS.EN.1011-1 and 2.
2. WELDERS AND WELDING PROCEDURES ARE IN ACCORDANCE WITH BS.EN.ISO.9806-1 AND BS.EN.ISO.15607.
3. PANELS CANNOT BE RADIOUS TO SUIT ON SITE. TIGHTER RADI CAN BE SUPPLIED PERFORMED BY SPECIAL ARRANGEMENT.
4. DIMENSIONS RELATIVE TO HEIGHT DATUM ASSUME THERE IS NO LONGITUDINAL FALL ON THE PLINTH, ADDITIONAL TOLERANCES TO TAKE ACCOUNT OF THESE FALLS ARE PERMISSIBLE.
5. AN EASILY LEGIBLE IDENTIFICATION PLATE SHALL BE APPLIED AND LOCATED NEAR TO THE TOP OF THE FIRST POST AT EACH APPROACH END IN AN EASILY VISIBLE POSITION.



SECTION A-A.



SECTION B-B.



ENLARGED VIEW ON HOLDING DOWN BOLT ARRANGEMENT.

MATERIAL SPECIFICATION.	
ITEM	SPECIFICATION
TOP RAIL.	TOP RAIL, INTER RAILS AND INFILLS IN ACCORDANCE WITH BS.EN.10219-1 AND BS.EN.10219-2
TOP JOINT.	GRADE S275J2H, POST IN ACCORDANCE WITH BS.EN.10210-1 AND BS.EN.10210-2
POST SECTION.	GRADE S355J2H, BASEPLATE AND JOINTS IN ACCORDANCE WITH BS.EN.10025-1 AND BS.EN.10025-2 GRADE S275J0.
INTER RAIL JOINT.	PLAIN WASHERS.
INTER RAIL.	STAINLESS STEEL WASHERS TO BE M12 FORM 'C' CONFORMING TO BS.4320 AND GALVANISED STEEL WASHERS TO BE M12 CONFORMING TO BS.4320 AND NYLON TOP HAT WASHER TO BE M12 CONFORMING TO NYLON 66 OR SIMILAR.
BASEPLATE.	
INFILLS.	

PEDESTRIAN GUARDRAIL INFORMATION	
UNFACTORED MOMENT OF RESISTANCE OF POST (kNm) AT UNDERSIDE OF BASEPLATE.	13.1kNm
SHEAR FORCE RESISTANCE OF POST (kN)	153.5kN
SIZE OF HOLDING DOWN BOLTS	M12

PEDESTRIAN GUARDRAIL PERFORMANCE.	
Eurocode 3 BS.EN.1993-1-1:2005	CLASS 'E'.
POST AND RAIL.	CLASS 'E'.
INFILL.	CLASS '1'.

APPROVED ANCHORAGE UNITS	
DRAWING NUMBER	VGAS/11.
OR OTHER APPROPRIATELY APPROVED CAST-IN OR DRILLED ANCHORAGE SYSTEM.	

SECTION SCHEDULE	
1	TOP RAIL SECTION.
2	INTERMEDIATE RAIL SECTION.
3	POST SECTION.
4	VERTICAL INFILL SECTION.
5	BASEPLATE SECTION.

TOLERANCES	
TOLERANCES AS SHOWN UNLESS STATED OTHERWISE.	
GREATER THAN 1000mm.	+ 2mm
LESS THAN 1000mm.	+ 1mm
ANGULAR DIMENSIONS.	+ 0°15'
NOTE: ALL ACCUMULATIVE TOLERANCES ARE TO BE CONTAINED WITHIN THE OVERALL TOLERANCE.	
SITE ERECTION TOLERANCES.	
WILL VARY TO SUIT SITE CONDITIONS.	
ALL STANDARDS QUOTED ARE DEEMED CURRENT AT THE DATE THE DRAWING IS ISSUED FOR APPROVAL, UNLESS OTHERWISE STATED.	
THIS DRAWING TO BE USED ONLY WITH W/O No.	
DRAWING TO BE RETURNED TO DRAWING OFFICE ON COMPLETION OF WORK	

Varley and Gulliver Ltd.
Alfred Street, Sparkbrook, Birmingham B12 8JR
Tel: 44 (0) 121 773 2441
Fax: 44 (0) 121 766 6875
Website: www.v-and-g.co.uk

STANDARD ARRANGEMENT DRAWINGS OF STEEL PEDESTRIAN GUARDRAIL SYSTEM - 1400mm HIGH.

DRAWING NUMBER
VGSP - 09.