

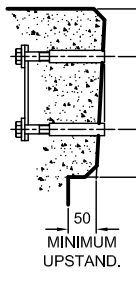
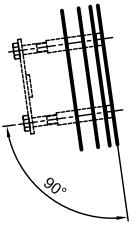
**ALTERNATIVE END PANEL.**  
(WITHOUT OVERHANG.)

**TYPICAL ELEVATION ON PARAPET.**  
(Tolerance +/- 5mm Non Accumulative.)

POSTS TO BE AT THE HIGH POINT OF ANY RAKING / SLOPING PANELS.

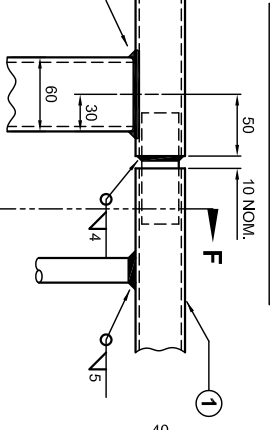
THE CONCRETE PLINTH IS TO BE DESIGNED BY OTHERS TO RESIST WITHOUT DAMAGE THE FORCES TRANSMITTED BY THE PARAPET UNDER LOAD.

ANCHORAGES TO BE ALIGNED PERPENDICULAR TO THE LONGITUDINAL ALIGNMENT OF THE CONCRETE PLINTH.



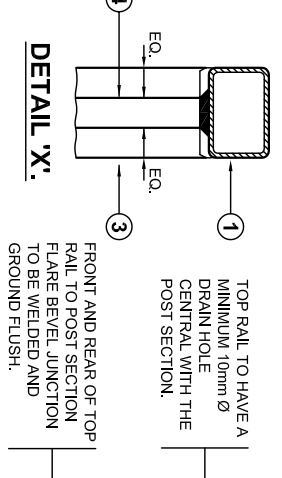
**SECTION THROUGH PLINTH.**

**SECTION F-F.**



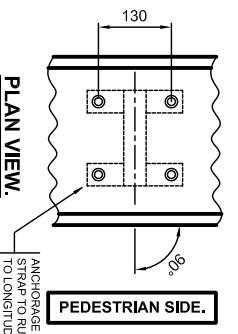
**DETAIL 'C'.**

**SECTION E-E.**



**DETAIL 'X'.**

**SECTION E-E.**



**PLAN VIEW.**

**ANCHORAGE DETAILS.**

APPROVED ANCHORAGE UNITS  
DRAWING NUMBER  
VGAS/11.

OR OTHER APPROPRIATELY APPROVED CAST-IN OR DRILLED ANCHORAGE SYSTEM.

SECTION SCHEDULE

NO.	DESCRIPTION	SECTION
1	TOP RAIL SECTION.	SECTION A-A
2	INTERMEDIATE RAIL SECTION.	SECTION B-B
3	POST SECTION.	SECTION C-C
4	VERTICAL INFILL SECTION.	SECTION D-D
5	BASEPLATE SECTION.	SECTION E-E

NOTE: ALL ACCUMULATIVE TOLERANCES ARE TO BE CONTAINED WITHIN THE OVERALL TOLERANCE.

W/O No. THIS DRAWING TO BE USED ONLY WITH DRAWING TO BE RETURNED TO DRAWING OFFICE ON COMPLETION OF WORK.

Alfred Street, Sparkbrook, Birmingham B12 8JR  
Tel: 44 (0) 121 773 2441  
Fax: 44 (0) 121 766 6875  
Website: www.v-and-g.co.uk

STANDARD ARRANGEMENT DRAWINGS OF STEEL PEDESTRAIN PARAPET SYSTEM - 1150mm HIGH.  
DRAWING NUMBER  
VGSP - 01.

**GENERAL NOTES.**

- ALL STEEL WELDING TO BE IN ACCORDANCE WITH BS.EN.1011-1 and 2.
- WELDERS AND WELDING PROCEDURES ARE IN ACCORDANCE WITH BS.ENISO.9606-1 AND BS.ENISO.15607.
- PANELS CANNOT BE RADIUSED TO SUIT ON SITE. TIGHTER RADI CAN BE SUPPLIED PERFORMED BY SPECIAL ARRANGEMENT.
- DIMENSIONS RELATIVE TO HEIGHT DATUM ASSUME THERE IS NO LONGITUDINAL FALL ON THE PLINTH, ADDITIONAL TOLERANCES TO TAKE ACCOUNT OF THESE FALLS ARE PERMISSIBLE.
- AN EASILY LEGIBLE IDENTIFICATION PLATE SHALL BE APPLIED AND LOCATED NEAR TO THE TOP OF THE FIRST POST AT EACH APPROACH END IN AN EASILY VISIBLE POSITION.

**MATERIAL SPECIFICATION.**

ITEM	SPECIFICATION	ITEM	SPECIFICATION
TOP RAIL.	TOP RAIL AND INTER RAILS IN ACCORDANCE WITH BS.EN.10219-1 AND BS.EN.10219-2 GRADE S275L2H, POST IN ACCORDANCE WITH BS.EN.10210-1 AND BS.EN.10210-2 GRADE S355L2H, BASEPLATE, INFILLS AND JOINTS IN ACCORDANCE WITH BS.EN.10025-1 AND BS.EN.10025-2 GRADE S275L0.	ALL BOLTS / SETSCREWS TO CONFORM TO BS.3692 AND BE STAINLESS STEEL TO BS.ENISO.3506-1 GRADE A4/80.	
TOP JOINT.		STAINLESS STEEL WASHERS TO BE M12 FORM 'C' CONFORMING TO BS.4320 AND TO BS.ENISO.3506 GRADE A4 OR A2. GALVANISED STEEL WASHERS TO BE M12 FORM 'G' CONFORMING TO BS.4320 AND NYLON TOP HAT WASHER TO BE M12 CONFORMING TO NYLON 66 OR SIMILAR.	
POST SECTION.			
INTER RAIL JOINT.			
INTER RAIL.			
BASEPLATE.			
INFILLS.			

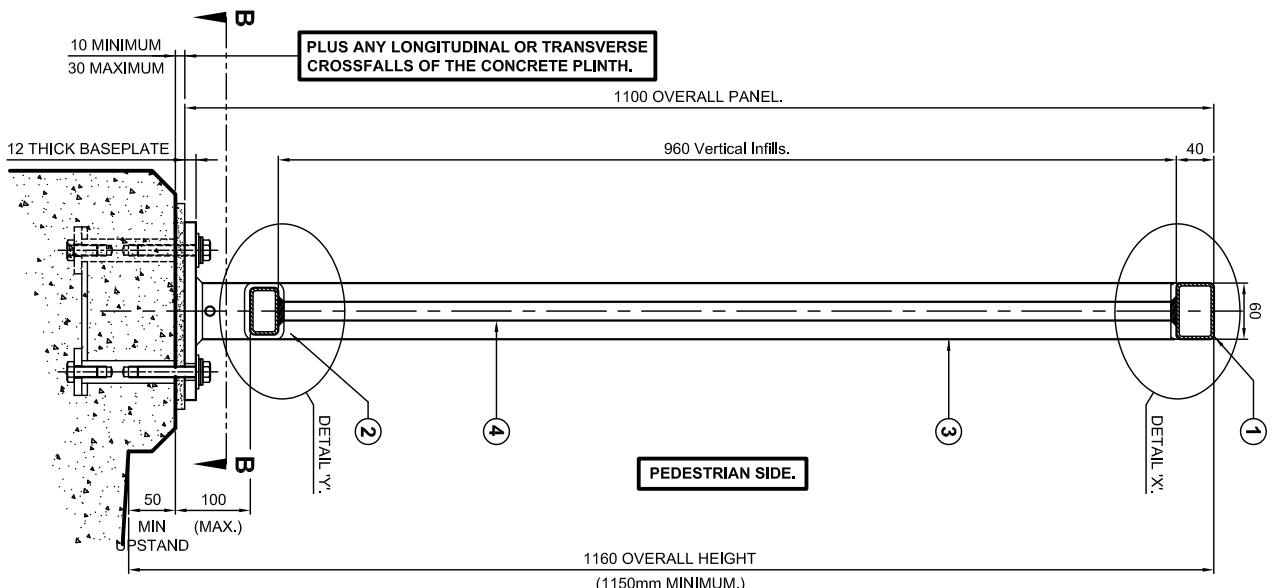
**PEDESTRIAN PARAPET INFORMATION**

UNFACTORED MOMENT OF RESISTANCE OF POST (kNm) AT UNDERSIDE OF BASEPLATE.	6.50kNm
SHEAR FORCE RESISTANCE OF POST (kN)	93.61kN
SIZE OF HOLDING DOWN BOLTS	M12

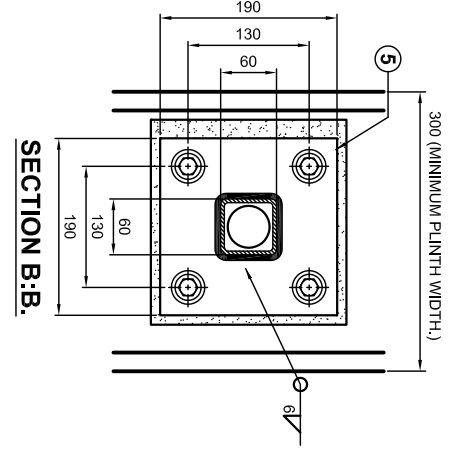
**PEDESTRIAN GUARDRAIL PERFORMANCE.**

Eurocode 3 BS. EN. 1993-1-1:2005	CLASS 'D'.
INTELL.	CLASS '1'.
POST AND RAIL.	CLASS '3'.
INFILL.	CLASS 'C'.

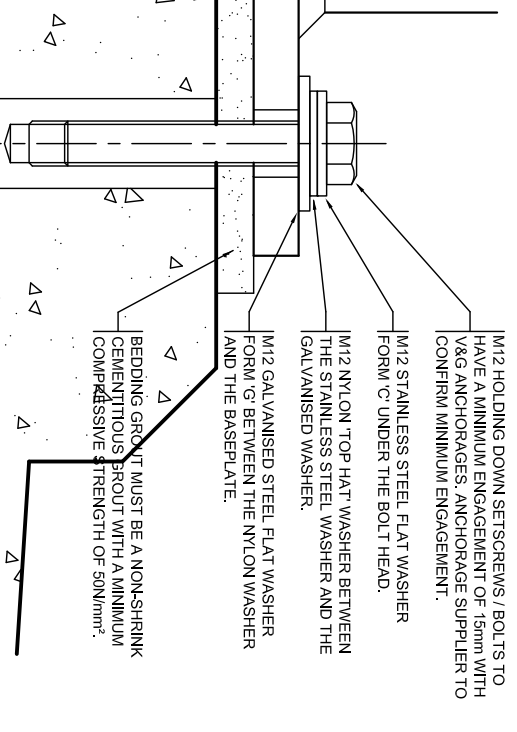
**SECTION A-A.**



**SECTION B-B.**



**SECTION B-B.**



**ENLARGED VIEW ON HOLDING DOWN BOLT ARRANGEMENT.**